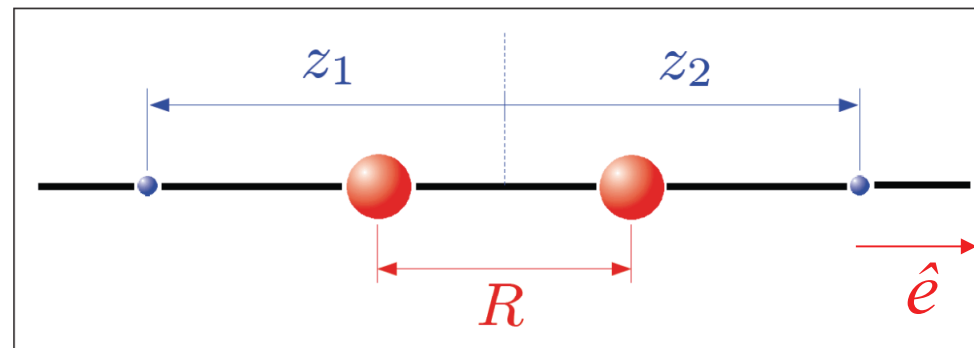


## Modèle théorique

Polarisation linéaire }  
 Discrimination angulaire } modèle 3×1D



Potentiel  
 Soft-Coulomb

$$V_{en}(R, z_i) = - \sum_{s=\pm 1} \frac{1}{\sqrt{(z_i + s \times R/2)^2 + \beta^2(R)}}$$

$$V_{12}(z_1 - z_2) = \frac{1}{\sqrt{(z_1 - z_2)^2 + \alpha^2(R)}}$$