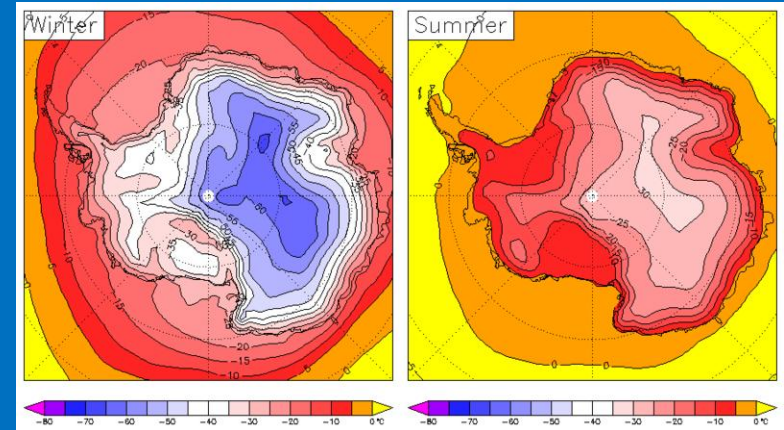


Weather of Antarctica

- * Antarctica is important to oceans, weather, climate, ecology
- * Lowest recorded temp. of -129°F at Vostok Station/wind chills to -148°F .
- * Mean annual temp. in interior is -70°F .
- * Winds of up to 200 knots at coasts.
- * Relatively moderate winds at South Pole.
- * Weather varies with location/elevation.
- * Snow rarely melts/very thick ice packs.
- * Many glaciers with crevasses.
- * Large seasonal temperature and sea ice variability (right). Timing important.



Temperature

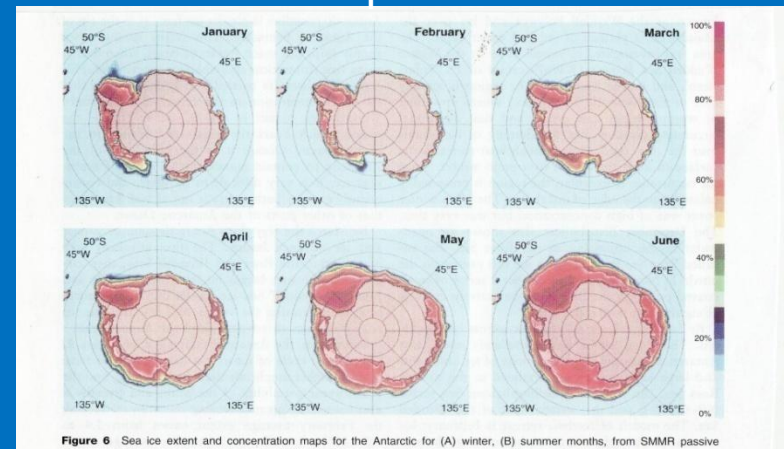


Figure 6 Sea ice extent and concentration maps for the Antarctic for (A) winter, (B) summer months, from SMMR passive microwave data averaged over the period 1979-83. Data derived with permission from Dierssen et al. (1992).

Ice Cover