

Fig. 17.1. Schematic illustration of coastal ocean processes which have been studied using coastal ocean circulation models. References are indicated by the embedded numerals: 1, Allen et al. (1995); 2, Barth (1994); 3, Beckers and Nihoul (1992); 4, Chapman and Lentz (1994); 5, Davies and Lawrence (1994b); 6, Gawarkiewicz (1993); 7, Gawarkiewicz and Chapman (1992); 8, Haidvogel et al. (1991a); 9, Keen and Glenn (1994); 10, Klinck (1995); 11, McCreary et al. (1991); 12, Oey and Chen (1992a); 13, Shaw and Divakar (1991); 14, Verron et al. (1995); 15, Wang et al. (1990); 16, Wilkin and Chapman (1990).

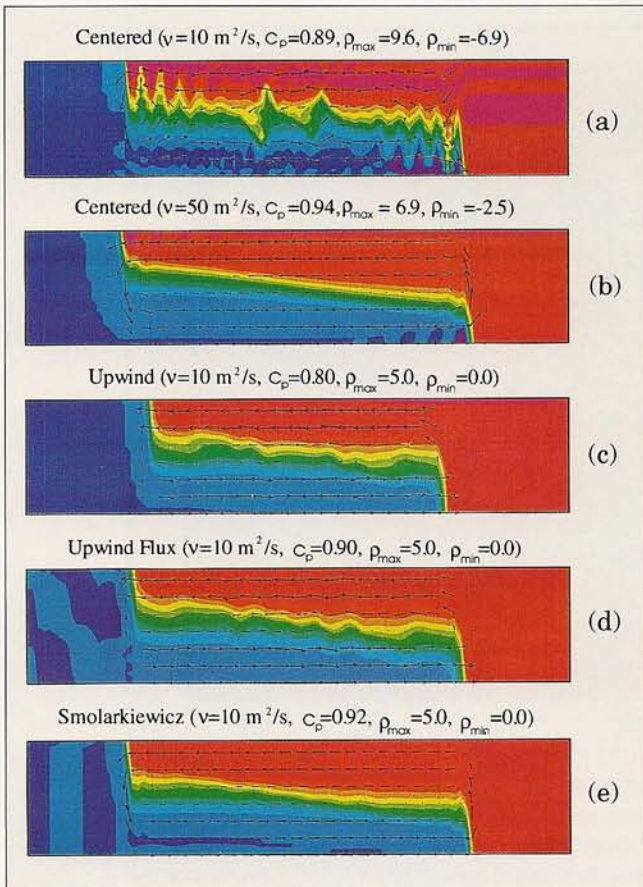


Fig. 17.4. Density structure at a time of 10 h for several solutions to the gravitational adjustment test problem using SCRUM. Indicated above each subfigure are the advective scheme used, the value of lateral viscosity employed, the resulting normalized adjustment speed of the front (observed speed divided by the theoretically expected value), and the maximum and minimum values of density.