

Supplemental Data

X-Ray Structures of the Hexameric

Building Block of the HIV Capsid

Owen Pornillos, Barbie K. Ganser-Pornillos, Brian N. Kelly, Yuanzi Hua, Frank G. Whitby, C. David Stout, Wesley I. Sundquist, Christopher P. Hill, and Mark Yeager

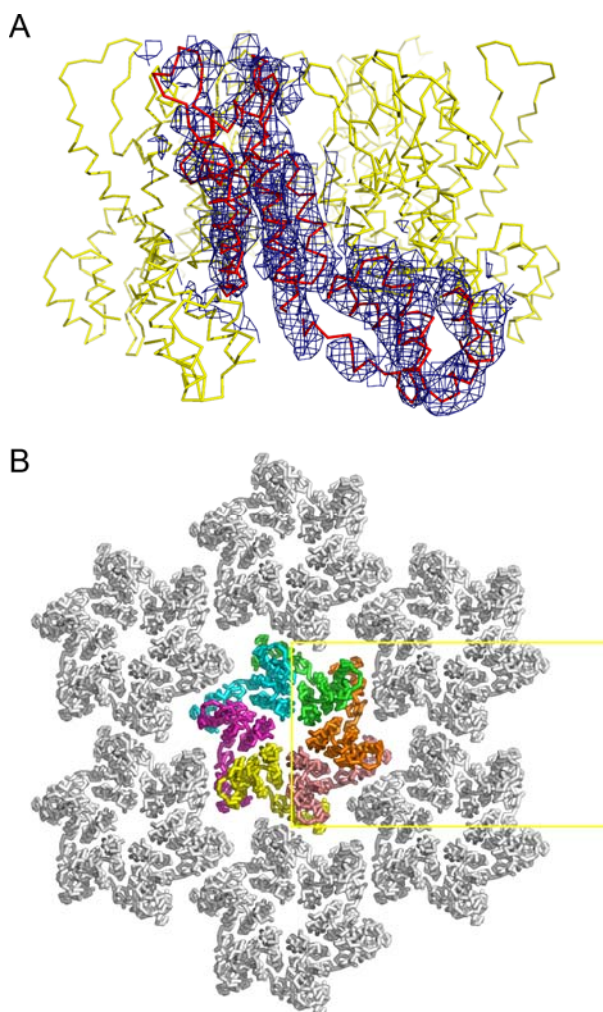


Figure S1. Structure of CcmK4-templated CA

(A) Unbiased electron density (blue mesh). One of the CA subunits was omitted from the model and the remaining five subject to rigid body refinement over their separate NTD and CTD. Density is shown at 0.8σ within 5 \AA of the omitted subunit (red). Density is clear for all of the CA helices but poorly defined for the N-terminal β -hairpin and the cyclophilin A-binding loop.

(B) Crystal packing viewed perpendicular to the *ab* plane, showing a sheet of hexamers that recapitulate the mature capsid lattice at its planar limit. Six protomers in the asymmetric unit (each in a different color) form the central hexamer. The unit cell is outlined in yellow.