

Yu et al, Fig. S1

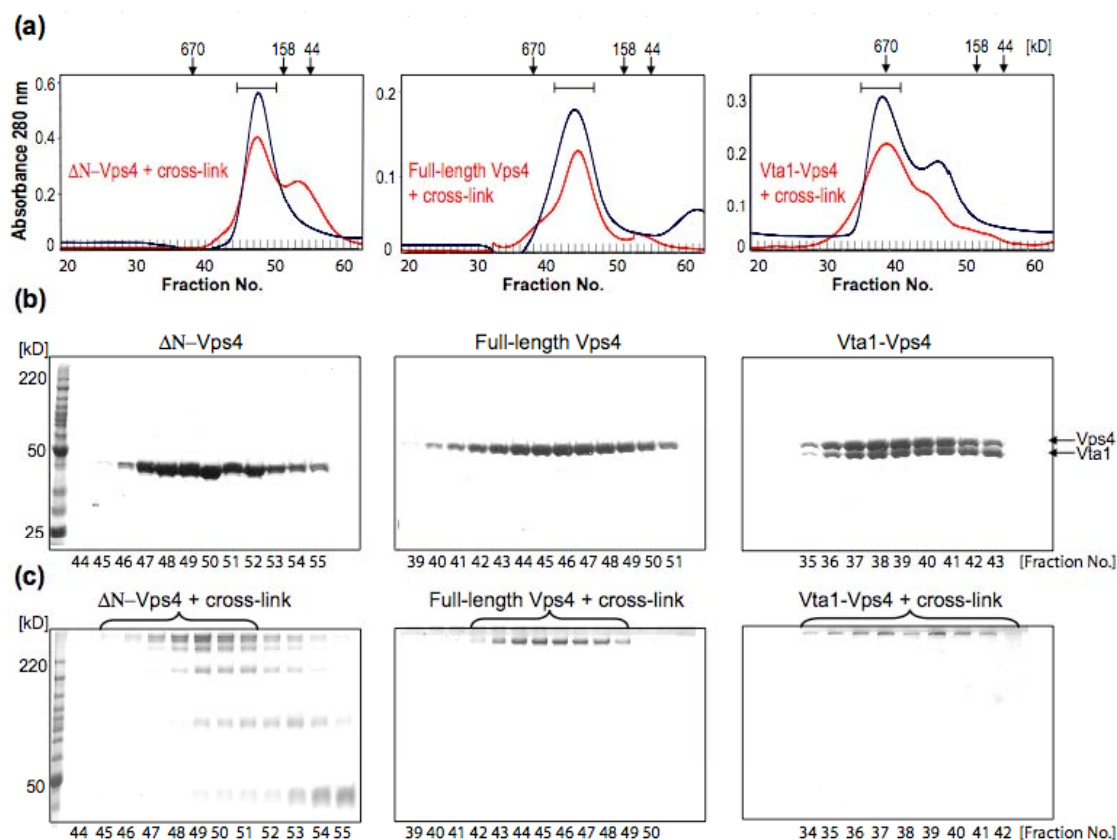


Fig. S1. Analyses of glutaraldehyde-crosslinked Vps4p complexes. SDS-PAGE analyses of assembled ΔN -Vps4p (left panels), full length Vps4p (middle panels), and Vta1-Vps4p (right panels) complexes before and after cross-linking with glutaraldehyde. **A**) Assembled complexes were analyzed by Superose 6 size-exclusion chromatography in 1 mM ATP (black traces). Peak fractions (square brackets) were glutaraldehyde crosslinked, concentrated and rechromatographed without ATP (red traces). **B and C**) Peak fractions from assembled (**B**) or crosslinked (**C**) samples were analyzed by SDS-PAGE, with Coomassie blue staining. Bracketed fractions in (**C**) were pooled and imaged by cryoEM.