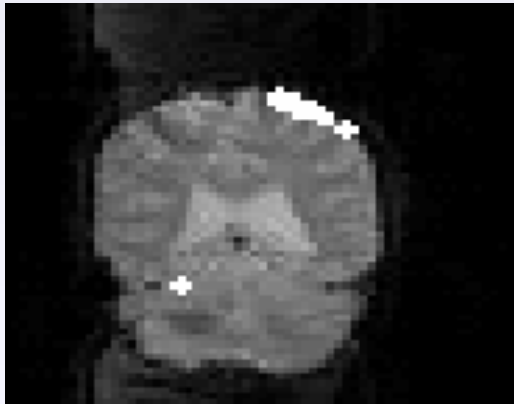


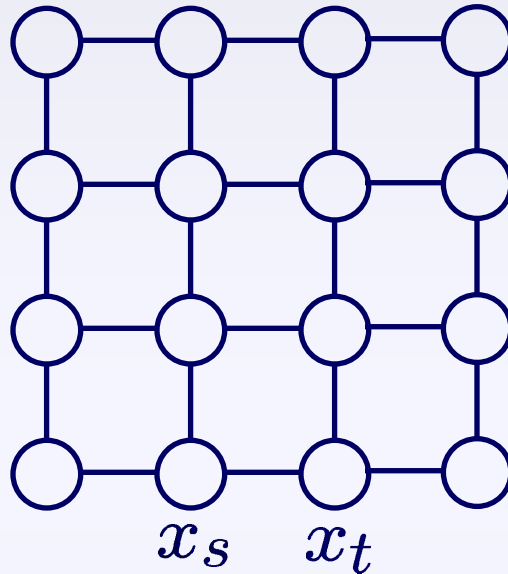
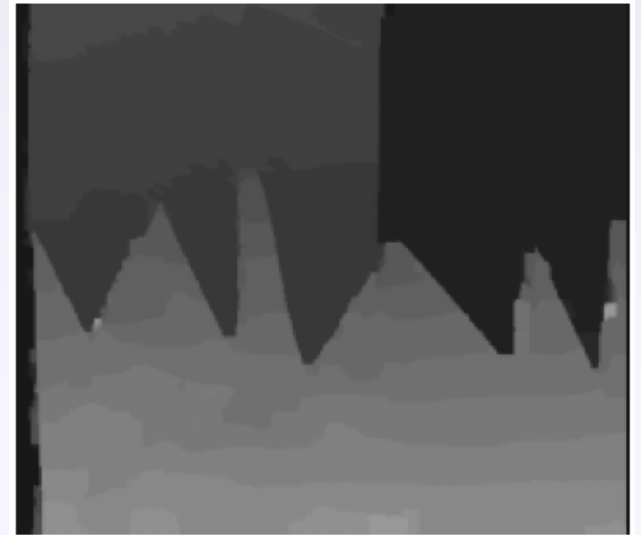
What do these models share?

fMRI Analysis

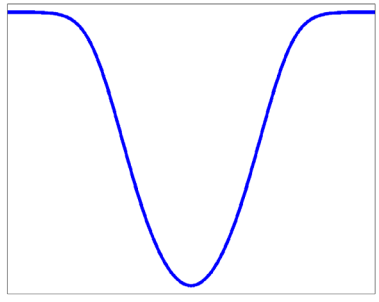


Kim et. al. 2000

Dense Stereo



$$\phi_{st}(x_s, x_t) = \begin{cases} 0 & x_s = x_t \\ \theta_{st} > 0 & \text{otherwise} \end{cases}$$



$$\phi_{st}(x_s, x_t) = D \left(\frac{x_s - x_t}{\sigma_{st}} \right)$$

pairwise energies are *attractive* to encourage spatial smoothness