

Figure 15. Mosaic of MI images of Overgaard, acquired on sols 721 and 723 with illumination from top. Box shows area used to gather data shown in Figure 29b.

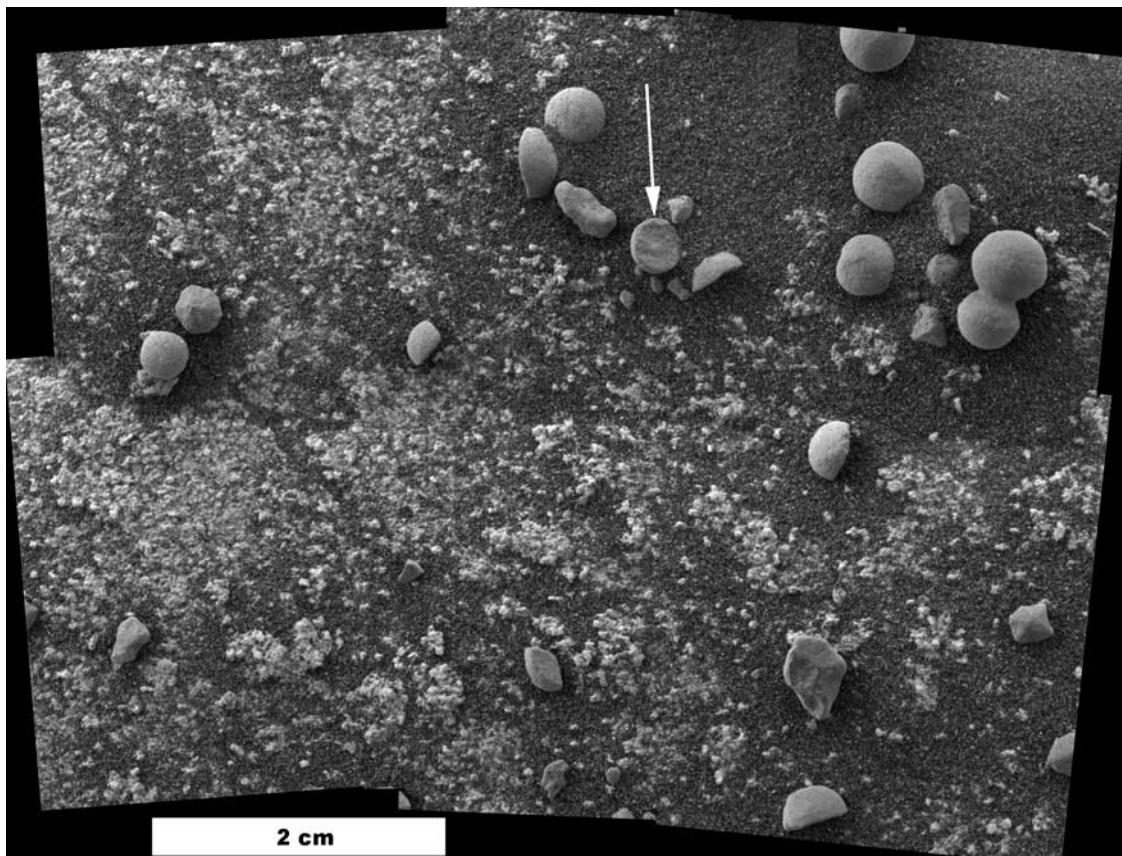


Figure 16. Mosaic of MI images of target Tuktoyuktuk, taken on sol 186 when fully shadowed. Texture appears similar to laminar rock surfaces, but no coherent laminae appear to be present. Several obviously broken spherules litter the surface (arrow).